



Race-Keeper iDash User Guide v1.6
December 2011



*Trivinci delivers user guides
exclusively in soft format*



Table of Contents

What You Need.....	4
Before You Begin	4
When You're Ready	5
Race-Keeper iDash Setup.....	5
1. Update Your Race-Keeper System Software!.....	5
2. Purchase Race-Keeper iDash Software License	5
3. Open Race-Keeper Comparo and Activate Race-Keeper iDash Software License	6
4. Copy License File to Your Race-Keeper System.....	7
5. Attach WiFi Adapter to Race-Keeper System.....	7
6. Download Race-Keeper iDash from Apple iTunes.....	8
Set Up the Apple iPhone or iPod Touch	9
Race-Keeper iDash Navigation Summary	10
Race-Keeper iDash Pages.....	11
Troubleshooting Guide	17



Document Version Control

Current version highlighted in RED.

Document Version #	Release Date DD/MM/YY	Revision(s)
v1.1 – April 2010	01/04/10	Initial release
v1.2 – May 2010	01/05/10	Minor revisions
v1.3 – September 2010	01/09/10	Minor revisions to setup instructions Revised graphics to show additional features (KPH, additional RPM data sources)
v1.4 – April 2011	01/04/11	Note re: WiFi connectivity problems with Apple 4G devices
v1.5 – November 2011	01/11/11	Minor revisions to setup instructions
v1.6 – December 2011	15/12/11	Addition of document version control Addition of trouble-shooting (end of document)



Race-Keeper iDash

Race-Keeper iDash is an in-car data display which shows live race data including lap times, RPM, MPH, gear and shift points. Race-Keeper iDash also stores and displays start-finish line(s) and stats for track sessions.

What You Need

- Race-Keeper video data system
- WiFi USB adapter (shipped to you) + cable to connect the adapter (for Race-Keeper HE systems only)
- **Third-generation* Apple iPhone and/or Apple iPod Touch** with in-car mounting bracket (available separately)
- Race-Keeper iDash software at Race-Keeper web site
- Race-Keeper iDash application at Apple iTunes Store

***Note: DO NOT USE 4th generation Apple devices, which DROP WiFi CONNECTION, producing intermittent connectivity between Race-Keeper and iDash application.**

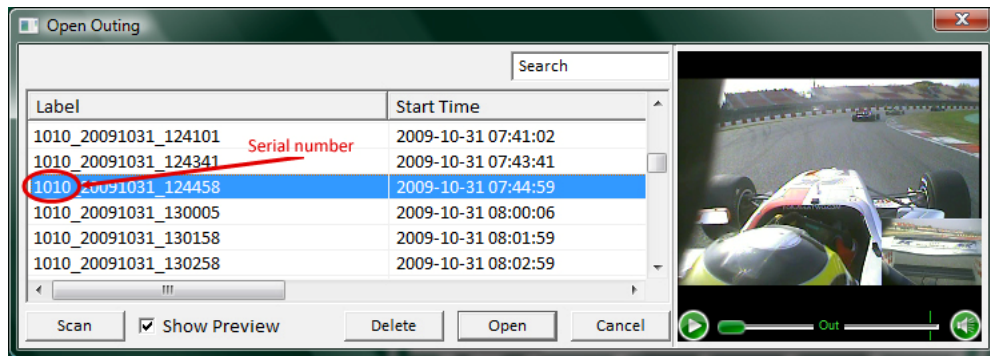
Before You Begin

Your Race-Keeper system serial number is required to activate your Race-Keeper iDash software license.

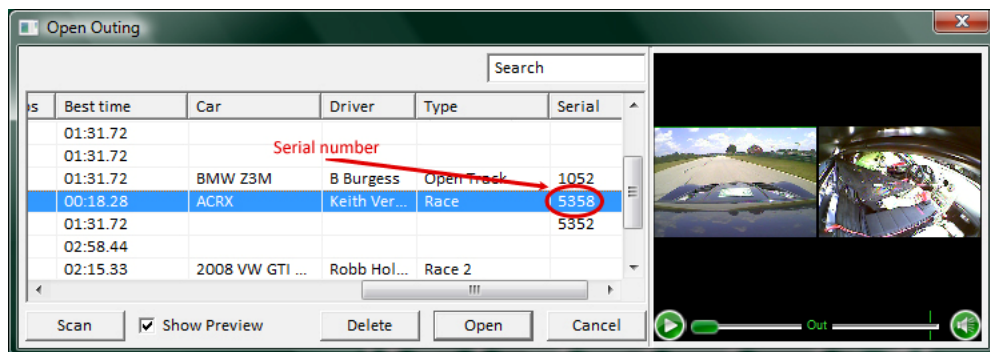
- Your serial number is four digits, starting with 1 (Race-Keeper SE) or 5 (Race-Keeper HE).
- Your serial number is located on your Race-Keeper video data system *and* on all track session folders.

To quickly obtain your serial number, open Race-Keeper Comparo software and select File → Open Outing.

If you don't rename your track sessions before importing, your session names include your serial number.



You can also identify your serial number by scrolling to the right.





When You're Ready

Follow these **SIX STEPS** to purchase, activate and update your system for Race-Keeper iDash.

1. Update Your Race-Keeper System Software!
2. Purchase Race-Keeper iDash Software License (at www.race-keeper.com)
3. Open Race-Keeper Comparo and Activate Race-Keeper iDash Software License
4. Copy License File to a **BLANK** SD card or USB stick and copy to Your Race-Keeper System
5. Attach WiFi Adapter to USB port on Race-Keeper System
6. Download Race-Keeper iDash from Apple iTunes

We highly recommend that you follow the detailed instructions below for each of the steps.

To set up your Apple iPhone and/or iPod Touch WiFi connection, see [Set Up the Apple iPhone or iPod Touch](#).

Race-Keeper iDash Setup

1. Update Your Race-Keeper System Software!

- Open Race-Keeper Comparo software and select Help → Check for Race-Keeper System Updates OR
 - Go to www.race-keeper.com/support/downloads to download current system software to a **BLANK** SD card or USB stick
- Power on your Race-Keeper video data system and wait until the system boots
- **DO NOT REMOVE OR INTERRUPT POWER DURING THE SYSTEM SOFTWARE UPDATE PROCESS**
- Insert SD into the Race-Keeper system
- Transfer LED will illuminate solid for up to several minutes
- System should automatically reboot and continue the update sequence
- System update may require the system to update and restart twice
 - If system has been unresponsive for five minutes, reboot your Race-Keeper system manually and permit the system to continue updating
- When system has booted up and is ready, your system has been properly updated
- Delete system update file(s) from SD before recording a video data session to that media

2. Purchase Race-Keeper iDash Software License

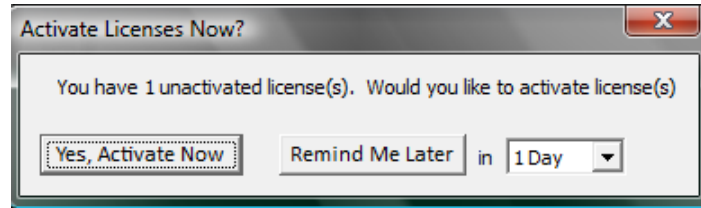
- Go to the Race-Keeper web site store
- Select and purchase Race-Keeper iDash In Car Display (in Race-Keeper Add-Ons)



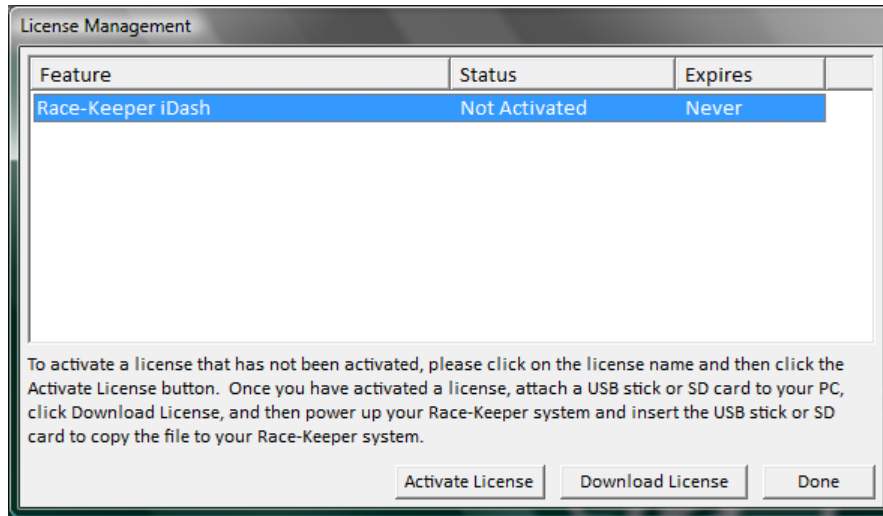
- Upon purchase, iDash software license will be available in Race-Keeper Comparo
- We will ship the USB WiFi adapter to you

3. Open Race-Keeper Comparo and Activate Race-Keeper iDash Software License

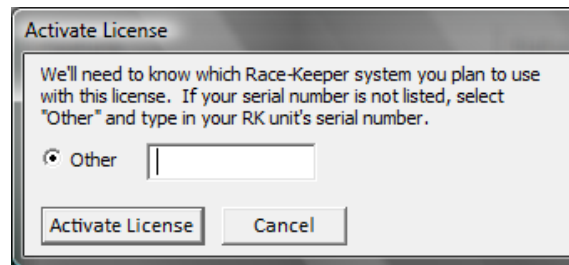
- Open Race-Keeper Comparo and follow instructions to activate your iDash software license using your Race-Keeper serial number
- Note: If Race-Keeper Comparo doesn't display an alert about licensing when the application starts, select Configure → License Manager and enter your Race-Keeper.com username and password when prompted
- When Race-Keeper displays the following prompt, Select "Yes, Activate Now"



- When Race-Keeper displays the following prompt, click on the license name and then click on "Activate License"



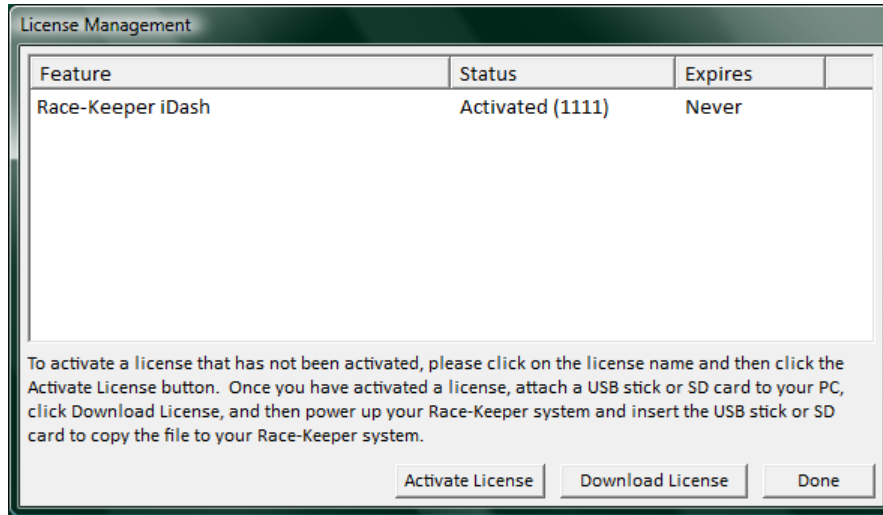
- When Race-Keeper displays the following prompt, enter the serial number from your Race-Keeper video data system and then click on "Activate License"



- Note: The easiest method to determine your serial number is to navigate to one of your recorded track sessions; your serial number is always the first four digits of every folder name. The Race-Keeper serial number also is printed on the bottom on your Race-Keeper video data system.



- When Race-Keeper displays the following prompt, click on “Download License” to download the update file to a **BLANK** SD card or USB stick.



4. Copy License File to Your Race-Keeper System

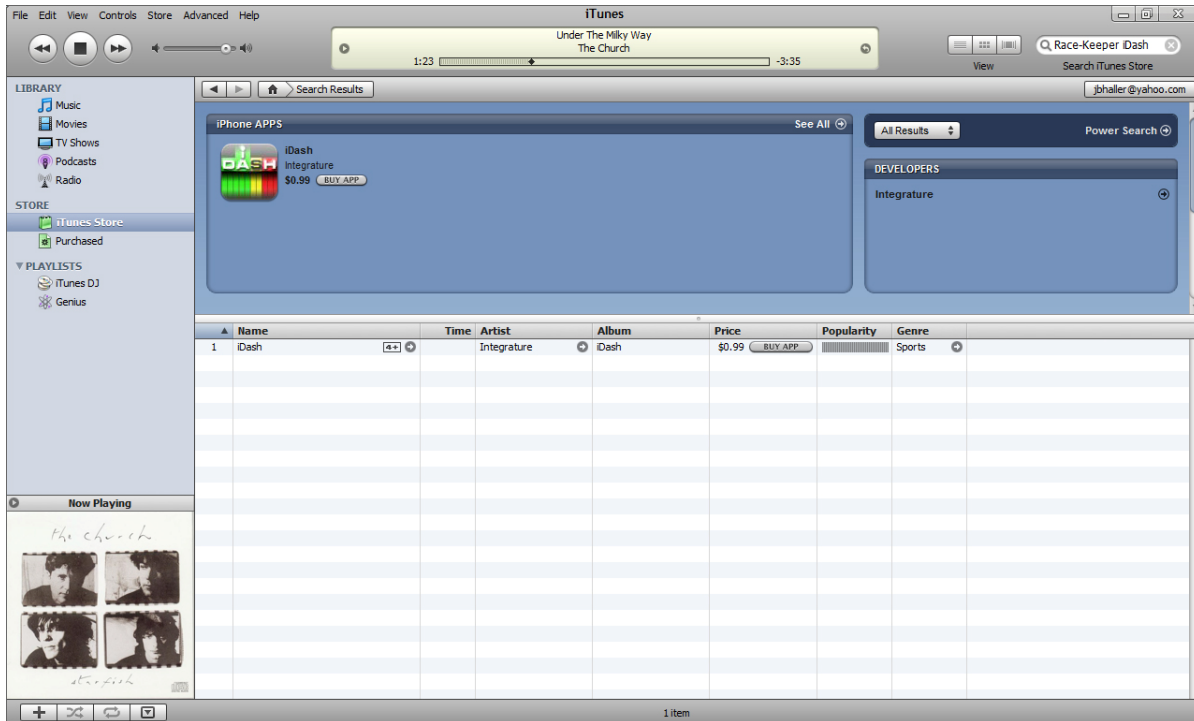
- Power on your Race-Keeper video data system and wait until the system boots
- Insert the SD card or USB stick with **ONLY** the iDash license file into the Race-Keeper system
 - Note: The Transfer LED will illuminate momentarily when the Race-Keeper system copies the iDash license file from the SD card or USB stick
- **Reboot your Race-Keeper system**

5. Attach WiFi Adapter to Race-Keeper System

- Attach the WiFi adapter to your Race-Keeper system
 - If you have a Race-Keeper SE system (green), plug the adapter into the available USB port
 - If you have a Race-Keeper HE system (black), attach the provided cable to the USB connector and then attach the WiFi adapter to the USB connector
- After approximately 30 seconds, the WiFi adapter’s blue LED will start to blink rapidly, which indicates that the WiFi adapters is active
- **Reboot your Race-Keeper system**

6. Download Race-Keeper iDash from Apple iTunes

- Open Apple iTunes (available at www.apple.com or via your Apple iPhone or Apple iPod Touch)
- Click on iTunes Store
- Search for Race-Keeper iDash (top right)
- Click “Buy App” and download to iPhone or iPod Touch
- Attach your iPhone or iPod Touch to sync and copy the iDash application to the device





Set Up the Apple iPhone or iPod Touch

With your Race-Keeper system on and transmitting data to your Apple iTouch or Apple iPhone, you can configure your device to use Race-Keeper data.

- In Settings, select General, then Auto-Lock and set to "Never."
 - Auto-lock can cause connection problems even AFTER the device has been unlocked again.
- In Settings, select Wi-Fi and confirm that Wi-Fi is switched ON
 - If you are using an iPhone, select Airplane mode, and then select WiFi to ON
- From Wi-Fi Networks, select Race-Keeper (displays with the serial number of your Race-Keeper system)
 - Set "Ask to Join Networks" to OFF



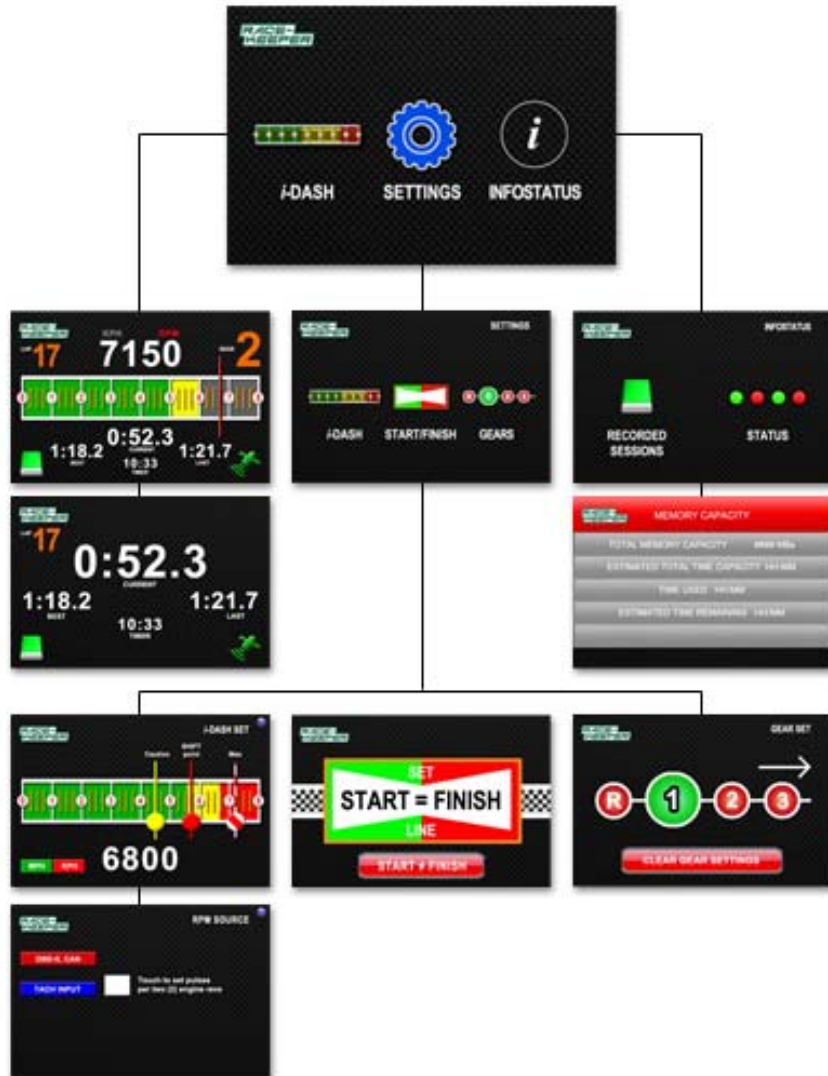
- Set up network addresses
 - Select Static and enter the IP Address: 192.168.253.###, **where ### can be any number between 1 and 254;** e.g., random number + last two digits of your Race-Keeper system serial number
 - Enter Subnet Mask: 255.255.255.0 and select Off under HTTP Proxy



- Exit Settings and then launch iDash



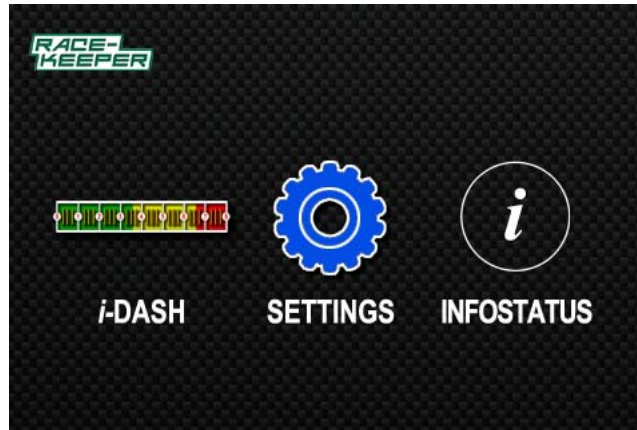
Race-Keeper iDash Navigation Summary





Race-Keeper iDash Pages

Home



- iDash drives you to the Race-Keeper dash display
- Settings gives you the power to set up your Rev Bar, start-finish line(s) and gears
- Infostatus provides info on your recorded sessions and critical resources (GPS, memory, battery)

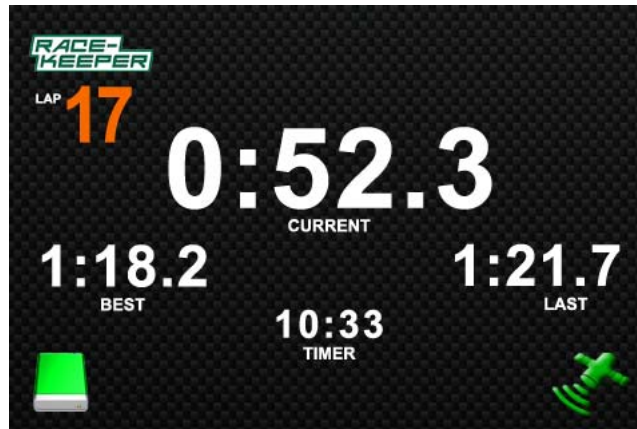
iDash Rev Bar



- Touch Lap Number to reset to zero
- Touch RPM or MPH value to toggle between RPM and speed
- **Touch Current to enlarge timing display (see next page)**
- Touch Timer to reset to zero
- Touch memory icon for status
- Touch satellite icon for GPS status
- iDash flashes bright red when RPM reaches an operator-configured rev limit based on RPM
- **Touch Race-Keeper logo to return to the Home Page**

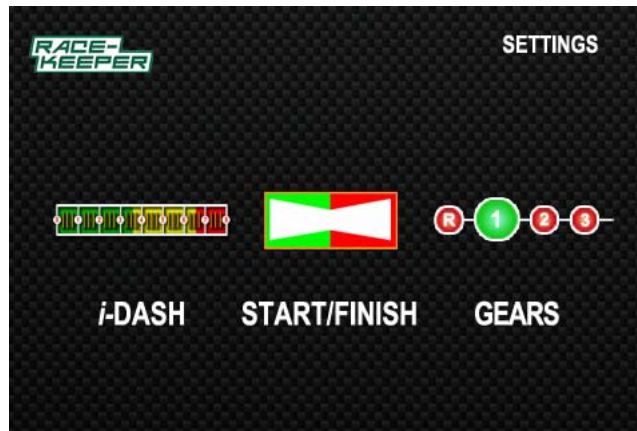


iDash Timer



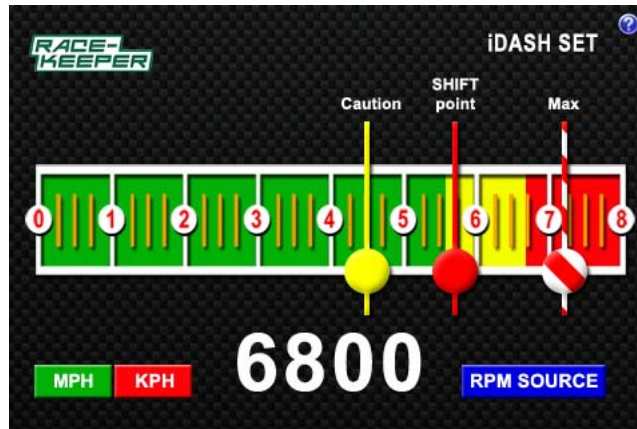
- Touch Lap Number to reset to zero
- Touch Timer to reset to zero
- Touch memory icon for status
- Touch satellite icon for GPS status
- iDash flashes bright red when RPM reaches an operator-configured rev limit based on RPM
- **Touch Race-Keeper logo to return to the Home Page**

Settings



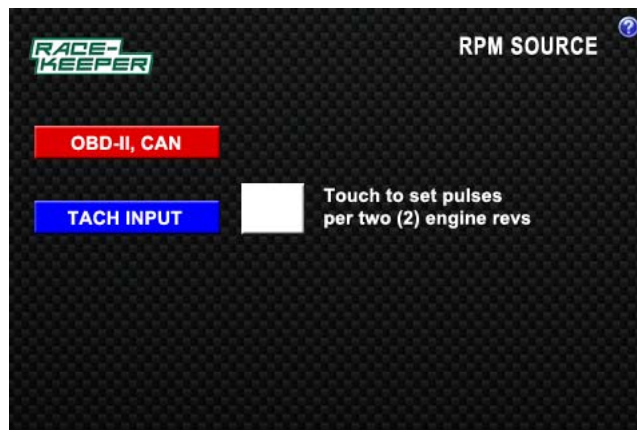
- Touch i-Dash to configure the Rev Bar limits
- Touch Start/Finish to set start and/or finish line(s)
- Touch Gears to calibrate gears
- **Touch Race-Keeper logo to return to the Home Page**

iDash Settings



- Drag caution, shift point and max RPM lines
- Drag max RPM line to the right to increase the scale
- Touch MPH or KPH to toggle between MPH and KPH
- Touch RPM Source to select source for RPM (OBD-II or Tach Input)
- **Touch Race-Keeper logo to return to the Settings Page**

RPM Source



- Touch OBD-II,CAN or TACH INPUT to select RPM source
- Selected RPM source is highlighted RED
- If using Tach Input, touch white data entry box to set pulses (same as used in Race-Keeper Comparo)
- **Touch Race-Keeper logo to return to the iDash Settings Page**

Line Set

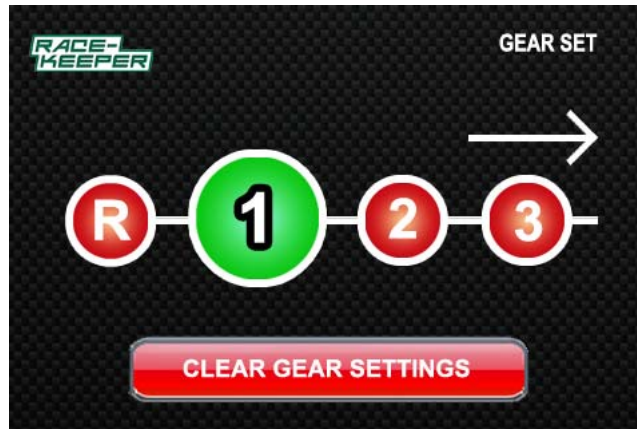


Note: This page requires configuration while the vehicle is in operation and therefore, requires an assistant. The vehicle must be in operation (i.e., driving on the track at the proper start (and finish) point(s)) to properly register vehicle heading. Race-Keeper expressly discourages configuration of this page by the operator without an assistant.

- If the start line is the same as the finish line (e.g., circuit track, circle track), operator will drive the vehicle over the start line and assistant will touch Start = Finish.
- If the finish line is at a different point than the start line (e.g., autocross, rally), assistant will touch Start does not equal Finish button and follow instructions.
- **Touch Race-Keeper logo to return to the Settings Page**



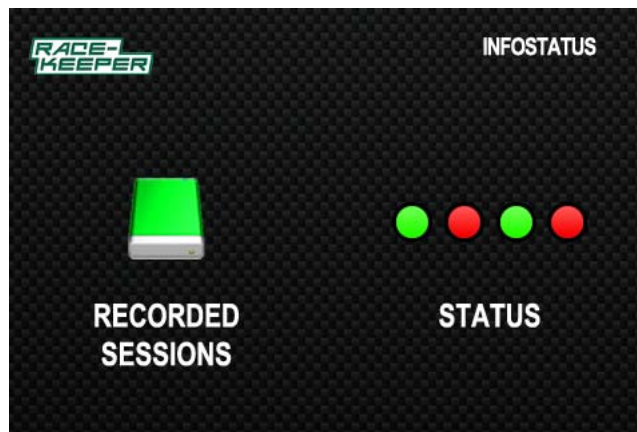
Gear Set



Note: This page requires configuration while the vehicle is in operation and therefore, requires an assistant. Race-Keeper expressly discourages configuration of this page by the operator without an assistant. Race-Keeper strongly recommends gear calibration in an environment unoccupied by other vehicles or other potential safety hazards.

- When assistant is ready, operator will drive the vehicle in each of the available gear settings; for each gear, the assistant will touch the corresponding gear number icon
- When a gear has been configured, it will be displayed in green
If a gear has not been configured, it will be displayed in red
- Any gear can be configured in any sequence
- Touch the white arrow to display more gears
- Touch Clear Gear Settings to reconfigure the gear settings
- **Touch Race-Keeper logo to return to the Settings Page**

Infostatus



- Touch Recorded Sessions to view session info on an attached SD card or USB stick
- Touch Status to view GPS, memory capacity and/or battery voltage
- **Touch Race-Keeper logo to return to the Home Page**

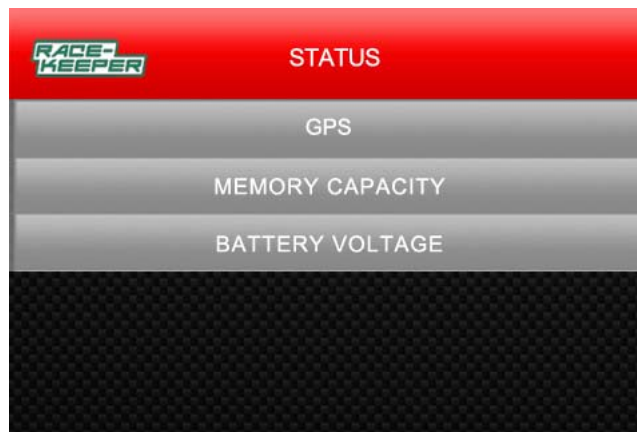


Recorded Sessions



- This is the Race-Keeper iDash Recorded Sessions page
- Touch a session to review data from the session
- Best session is highlighted in green
- Scroll down to view additional sessions
- **Touch Race-Keeper logo to return to the Infostatus Page**

Status



- Touch one of the line items to view data
- **Touch Race-Keeper logo to return to the Infostatus Page**



Troubleshooting Guide

Make sure that...

- **Your Race-Keeper system is fully booted and the LED on the attached WiFi dongle is flashing.** The Wi-Fi network broadcasted by the Race-Keeper should be visible on any Wi-Fi-enabled device, including laptop computers.
- **Your mobile device properly “remembers” the setting (IP address, etc.) for your Race-Keeper connection.** If you exit out of the connection settings and immediately return to the menu and the IP address has disappeared, it’s because one of the settings is invalid.
- **Auto-Lock is disabled on your mobile device.**
- **Auto-Join is enabled on the Race-Keeper Wi-Fi setting.**

If you...

- **Experience occasional dropouts,** make sure the mobile device is well-charged. Some devices have difficulty maintaining Wi-Fi connections when the battery power drops below 30%
- **Still have difficulty connecting, change the last three digits of your IP address** (must be 1 through 254).
- **Still have difficulty connecting, make sure your iDash application fully shuts down between uses.**

On some devices, the center button fully closes the app, and on others it only minimizes it. iDash ALWAYS launches with a safety disclaimer; if you don’t see the disclaimer when you start iDash, then the app did not fully shut down the last time you used it. Therefore, close and reopen the app.

To close and reopen the app, double-click the center button; icons of open apps will appear at the bottom of the screen, scrolling horizontally. Click and hold any one of those icons and a minus sign will appear on them and they will shake slightly. Then, scroll to the iDash icon and tap the minus sign to close it. While you’re at it, you might want to close any other apps that might be draining system resources.

If you still can’t connect...

- **Delete the Wi-Fi connection and recreate it from scratch.** Go to the connection settings and click “Forget this Network,” exit by clicking “Wi-Fi Settings,” and then recreate the connection (see page 9).
- **Contact us** at operations@race-keeper.com or (571) 203-1420.